



Thurstan Street, London  
SW6

GARTON JONES.COM





Thurstan Street, London  
, SW6

GARTON JONES.COM

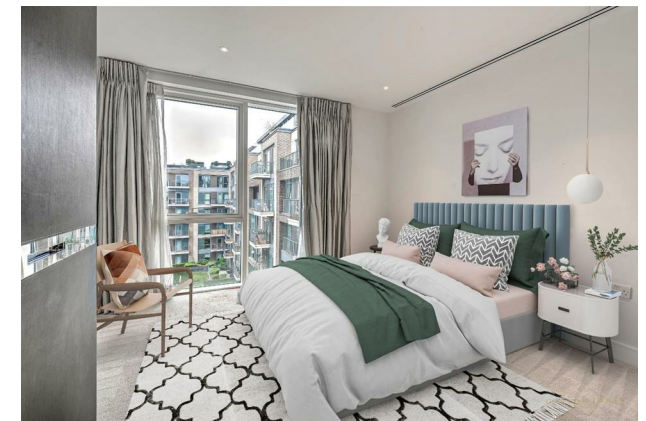
11 Park Street  
Chelsea Creek  
London  
SW6 2FS

Sales +44 (0) 20 7824 7090  
paul@gartonjones.com  
www.gartonjones.com

## £1,000,000 Leasehold

A spacious 4th floor modern two-bedroom apartment 879sqft (81.7sqm) which includes PARKING. The property comprises of a spacious open plan living area with a modern kitchen with built in appliances and access to a balcony. There are two double bedrooms both benefitting from built in wardrobes and the master an ensuite, also there is a guest bathroom. The idyllic canal side development which was built by the renowned Berkeley St George offers On-site a resident's gym, swimming pool, spa and 24-hour concierge. Chelsea Creek is located nearby to Imperial Wharf Overground station and Fulham Broadway Underground station both offering excellent links around London as well as the famous Kings Road which offers a wide range of designer boutiques, top class restaurants, bars and quaint cafes.

- Two Bedroom Apartment
- 4th Floor With Lift
- 879sqft (81.7sqm)
- Idyllic Dockside Location
- Open Plan Lounge — Kitchen Area
- Integrated Appliances
- Balcony
- Residents Spa — Gym & Swimming Pool
- Right To Park
- EPC C (69)



\*\* Images staged for marketing Purposes \*\*

Service Charge - £7052  
Ground Rent - £500  
Lease 999 years from 1st June 2010

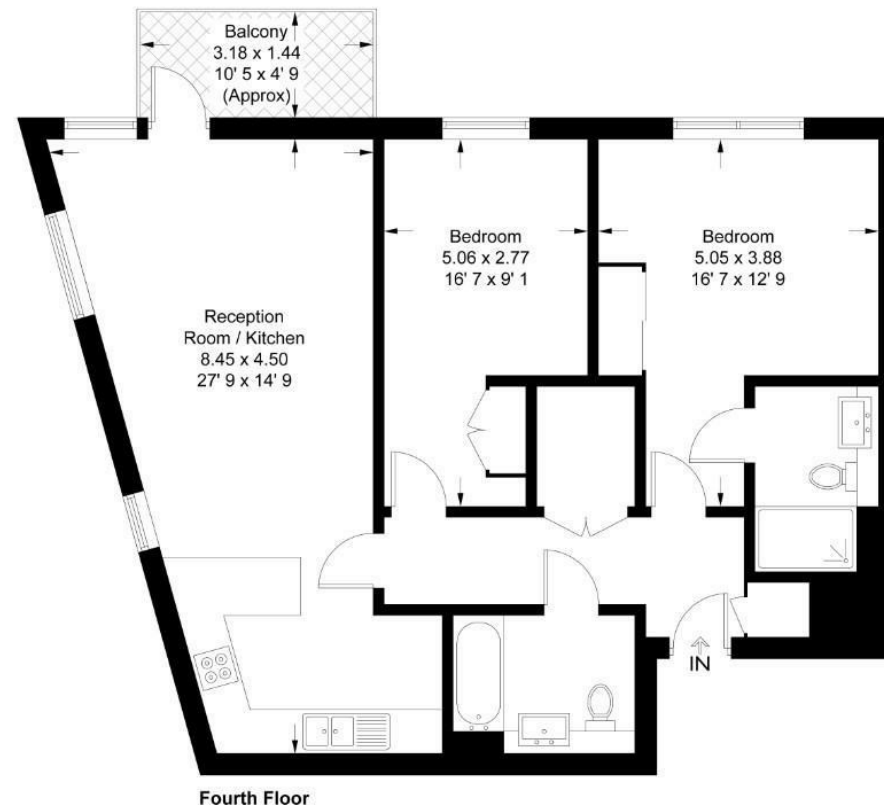
Council Tax — London Borough Of  
Hammersmith & Fulham Council Band G  
EPC C (69)

EPC certificate available on request.

## Lockside House

Approximate Gross Internal Area = 879 sq ft / 81.7 sq m  
Balcony = 49 sq ft / 4.6 sq m

GARTON JONES  
LONDON



This plan is not to scale and must be used as layout guidance only. All measurements and areas are approximate and should not be relied upon to provide accurate information. This plan must not be relied upon when making property valuations, design considerations or any other such relevant decisions. We accept no responsibility or liability (whether in contract, tort or otherwise) in relation to any loss whatsoever arising from or in connection with any use of this plan or the adequacy, accuracy or completeness of it or any information within it.





